

KT-04MB Series

FEATURES

- Low pitch sound, medium sound output
- Low current consumption, trigger control terminal
- Extremely durable, Long life
- Ultra small size, easy to install.

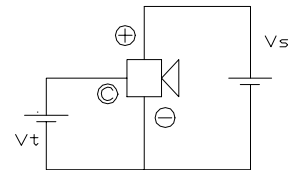


Noryl (MPPO) Housing Material
Color: Gray

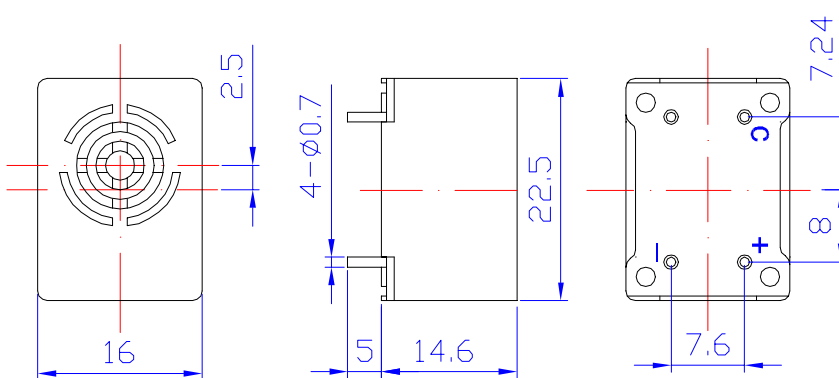
APPLICATIONS

Alarm clock, timer, burglar and fire alarm, portable battery operated equipment, electronic cash register, automobile electronics

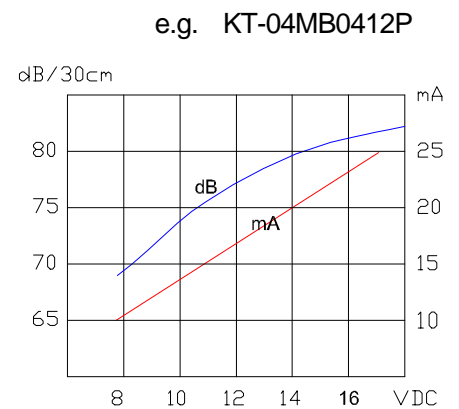
COUPLED CIRCUIT



DIMENSIONS (unit in mm)



CHARACTERISTICS



SPECIFICATIONS (all data taken at 25 °C unless otherwise specified)

Model No.	Unit	KT-04MB0406P	KT-04MB0412P	KT-04M04B24P
Rated Voltage	V	6	12	24
Operating Voltage	V	3 ~ 8	8 ~ 16	18 ~ 30
*Max. Rated Current	mA	23	20	30
Min. Trigger Current	mA	3	5	18
*Sound Output @ 30cm	dB	70		
Fundamental Frequency	Hz	400±100		
Tone nature		Continuous		
Operating Temperature	°C	-20 ~ +70		
Weight	g	10		

* Value applying rated voltage, DC